

Annex I

Preserved/Transplanted
Plant Species of
Conservation Importance
Monitoring

Contract No.: NL/2020/02

Tung Chung New Town Extension - Salt Water Supply System

Monthly Report (20 March 2023) In-situ Plant Species of Conservation Importance - Photographic Records



G01_30-R001



G01_30-R002



G01_30-R003



G01_30-R004



G01_30-R005



G01_39-R01_Inaccessible



G01_39-R02_Inaccessible



G01_81-RT-01

Contract No.: NL/2020/02

Tung Chung New Town Extension - Salt Water Supply System

Monthly Report (20 March 2023) In-situ Plant Species of Conservation Importance - Photographic Records



G01_81-RT-02 (T1535)



G02_29-R007



G02_29-R013

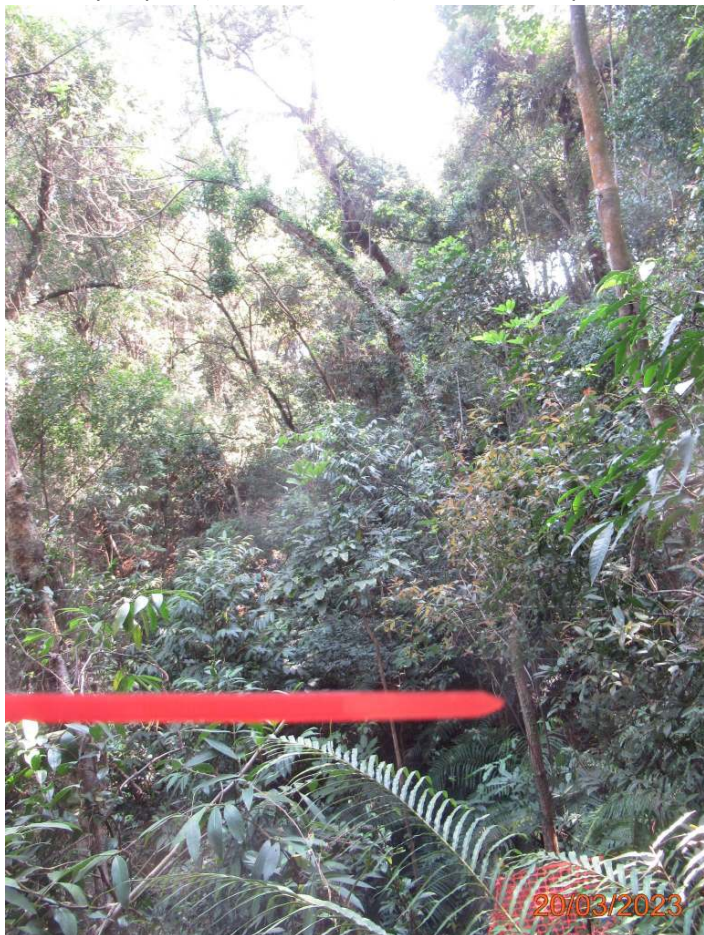


G03_44-R014

Contract No.: NL/2020/02

Tung Chung New Town Extension - Salt Water Supply System

Monthly Report (20 March 2023) In-situ Plant Species of Conservation Importance - Photographic Records



G03_44-R015



G03_44-R017



G04_21-R03



G04_45-R011

Contract No.: NL/2020/02

Tung Chung New Town Extension - Salt Water Supply System

Monthly Report (20 March 2023) In-situ Plant Species of Conservation Importance - Photographic Records



G04_83_84_85-R04 (T1788)



G04_83_84_85-R05 (T1572)



G04_83_84_85-R06



G04_83_84_85-R07

Contract No.: NL/2020/02

Tung Chung New Town Extension - Salt Water Supply System

Monthly Report (20 March 2023) In-situ Plant Species of Conservation Importance - Photographic Records



G04_83_84_85-R08



G04_83_84_85-R09



G04_83_84_85-R010

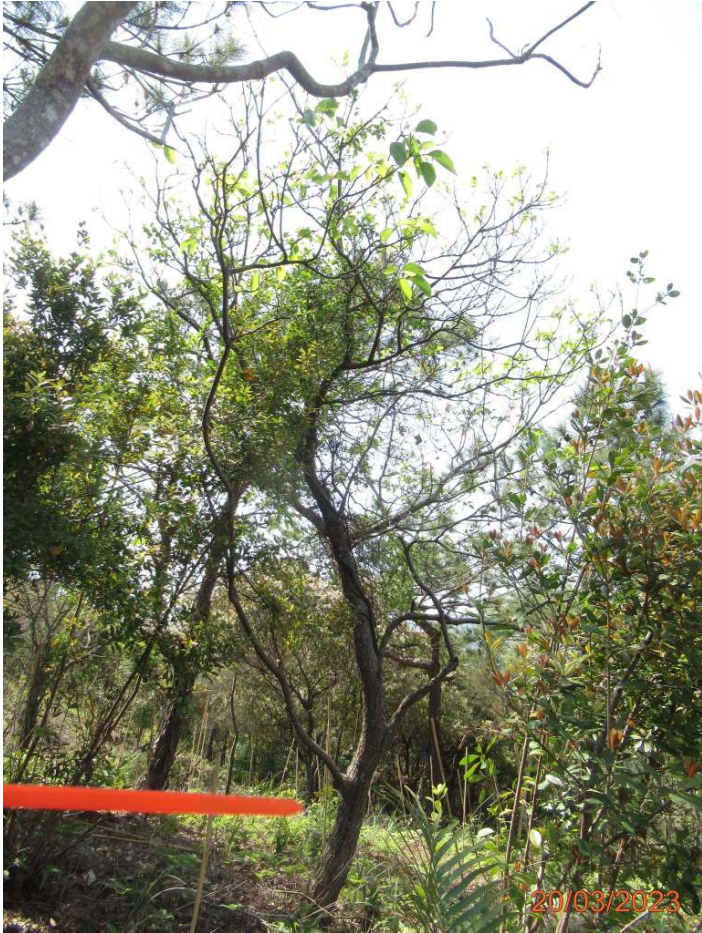


G04_83_84_85-R011

Contract No.: NL/2020/02

Tung Chung New Town Extension - Salt Water Supply System

Monthly Report (20 March 2023) In-situ Plant Species of Conservation Importance - Photographic Records



G05_9-R04



G05_67-R008



G06_66-R009

Drawing no.	Tree group no.	Tree No.	Botanical Name	Chinese Name	SIZE			Amenity Value	Form	Health	Structural Condition	Conservation Status	Recommendation in Detailed Preservation and/or Translocation Plan for Plant Species of Conservation Importance for Tung Chung East (Retain/ Transplant/ Fell)	Justification	Remarks
					Height (m)	DBH (mm)	Spread (m)								
60507694/C2/1721	G01/39	R01	<i>Gmelina chinensis</i>	石梓	-	-	-	-	-	-	-	Yes	Retain	-	On Slope, Inaccessible
		R02	<i>Gmelina chinensis</i>	石梓	-	-	-	-	-	-	-	Yes	Retain	-	On Slope, Inaccessible
	G06/59	R018	<i>Gmelina chinensis</i>	石梓	-	-	-	-	-	-	-	Yes	Retain	-	Missing
	G03/61	R019	<i>Gmelina chinensis</i>	石梓	-	-	-	-	-	-	-	Yes	Retain	-	Missing
	G05/62	RT06	<i>Gmelina chinensis</i>	石梓	-	-	-	-	-	-	-	Yes	Transplant	Direct conflict with proposed works	Missing
	G01/81	RT-01	<i>Gmelina chinensis</i>	石梓	5	160	3	Good	Poor	Fair	Fair	Yes	Retain	-	On slope, Strangled by Epiphytes
		RT-02 (T1535)	<i>Gmelina chinensis</i>	石梓	8	110	3	Good	Poor	Fair	Fair	Yes	Retain	-	On slope, Co-dominant Branches, Strangled by Epiphytes
	G02/82	RT03	<i>Gmelina chinensis</i>	石梓	-	-	-	-	-	-	-	Yes	Transplant	Direct conflict with proposed works	Missing
	G04/83/84/85	R04 (T1788)	<i>Gmelina chinensis</i>	石梓	9	260	8	Good	Poor	Fair	Fair	Yes	Retain	-	On slope, Multiple Trunks
		R05 (T1572)	<i>Gmelina chinensis</i>	石梓	8	120	5	Good	Poor	Fair	Fair	Yes	Retain	-	On slope, Broken branch
		R05	<i>Gmelina chinensis</i>	石梓	-	-	-	-	-	-	-	Yes	Retain	-	Missing
		R06	<i>Gmelina chinensis</i>	石梓	5	100	3	Good	Fair	Fair	Fair	Yes	Retain	-	On slope
		R07	<i>Gmelina chinensis</i>	石梓	8	166	5	Good	Poor	Fair	Fair	Yes	Retain	-	On slope, Co-dominant Trunks
		R08	<i>Gmelina chinensis</i>	石梓	7	160	5	Good	Poor	Fair	Fair	Yes	Retain	-	On slope, Broken Leader, Epicormics, Imbalanced Crown
		R09	<i>Gmelina chinensis</i>	石梓	5	140	4	Good	Poor	Fair	Fair	Yes	Retain	-	On slope, Broken Leader with Epiphyte, Broken Leader with Epicormics
		R010	<i>Gmelina chinensis</i>	石梓	8	110	3	Good	Poor	Fair	Fair	Yes	Retain	-	On slope, Broken Leader with Epicormics
R011		<i>Gmelina chinensis</i>	石梓	9	130	4	Good	Poor	Fair	Poor	Yes	Retain	-	On slope, Multiple Branches, Leaning without Self correction	
60507694/C2/1722	G04/21	R03	<i>Gmelina chinensis</i>	石梓	5	120	2	Good	Fair	Fair	Fair	Yes	Retain	-	Undersized, On Slope
	G05/9	R04	<i>Gmelina chinensis</i>	石梓	5	100	2	Good	Fair	Fair	Fair	Yes	Retain	-	On Slope
60507694/C2/1732	G01/30	R001	<i>Gmelina chinensis</i>	石梓	7	110	2	Good	Poor	Fair	Fair	Yes	Retain	-	On Slope
		R002	<i>Gmelina chinensis</i>	石梓	8	120	5	Good	Poor	Fair	Fair	Yes	Retain	-	On slope, Co-dominant Branches, Root Flare was Partially Buried, Dead Stub
		R003	<i>Gmelina chinensis</i>	石梓	5	140	2	Good	Poor	Fair	Fair	Yes	Retain	-	On slope, Bulge at Trunk, Root Flare was Partially Buried Climber
		R004	<i>Aquilaria sinensis</i>	土沉香	10	150	3	Good	Fair	Fair	Fair	Yes	Retain	-	On slope
		R005	<i>Aquilaria sinensis</i>	土沉香	8	130	3	Good	Fair	Fair	Fair	Yes	Retain	-	On slope
		R006	<i>Aquilaria sinensis</i>	土沉香	-	-	-	-	-	-	-	Yes	Retain	-	Missing
	G02/29	R007	<i>Gmelina chinensis</i>	石梓	10	170	5	Good	Poor	Fair	Fair	Yes	Retain	-	On slope, Co-dominant Branches with Included Bark Crossed Branches, Old termite tracks on trunk
		R013	<i>Gmelina chinensis</i>	石梓	8	150	7	Good	Poor	Fair	Fair	Yes	Retain	-	On slope, Co-dominant Branches, Epicormics at Branch Broken Leader with Epiphyte
	G03/44	R014	<i>Gmelina chinensis</i>	石梓	7	160	5	Good	Poor	Fair	Fair	Yes	Retain	-	On slope, Co-dominant Branches
		R015	<i>Gmelina chinensis</i>	石梓	6	110	2	Good	Poor	Poor	Fair	Yes	Retain	-	On slope, Broken Leader, Epiphytes
		R016	<i>Gmelina chinensis</i>	石梓	-	-	-	-	-	-	-	Yes	Retain	-	Missing
	G04/45	R017	<i>Gmelina chinensis</i>	石梓	8	130	4	Good	Poor	Fair	Fair	Yes	Retain	-	On slope, Broken Leader with Epicormics
		R010	<i>Gmelina chinensis</i>	石梓	-	-	-	-	-	-	-	Yes	Retain	-	Missing
		R011	<i>Gmelina chinensis</i>	石梓	8	140	7	Good	Poor	Fair	Fair	Yes	Retain	-	On slope, Co-dominant Branches
		R012	<i>Gmelina chinensis</i>	石梓	-	-	-	-	-	-	Yes	Retain	-	Missing	
G05/67	R008	<i>Gmelina chinensis</i>	石梓	6	120	4	Good	Fair	Fair	Fair	Yes	Retain	-	On slope	
G06/66	R009	<i>Gmelina chinensis</i>	石梓	7	120	5	Good	Poor	Fair	Fair	Yes	Retain	-	On slope, Epicormic at Broken Stump	